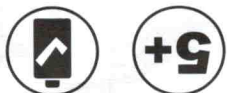


# DREAM BRIGHT STELLA



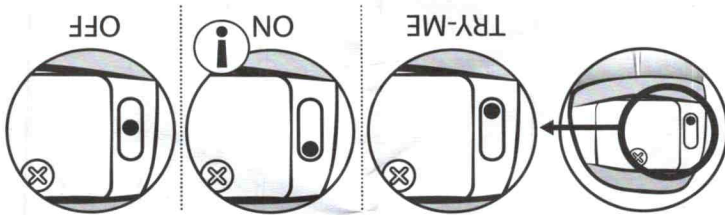
©2019 The Moose Group



- CONTENTS:
- 1x electronic fashion doll
  - 1x removable dress
  - 6x twist-in hair stars
  - 1x instruction manual

www.dreamseekersofficial.com

## CHANGING FUNCTION



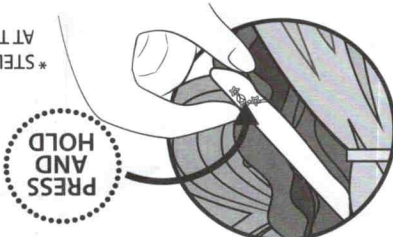
ENSURE STELLA HAS BEEN SWITCHED TO ON MODE FOR PLAY

## CHANGING LIGHT MODES

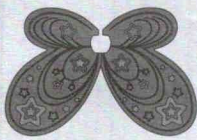
Stella knows how to make her dreams come true! She uses her glow to be kind and brave and shine bright to inspire her friends. Squeeze Stella's hand to share her glow - and you can achieve your dreams too!

### RAINBOW OF POSITIVITY LIGHT MODE

PRESS AND HOLD HAND FOR 2s TO ACTIVATE \*



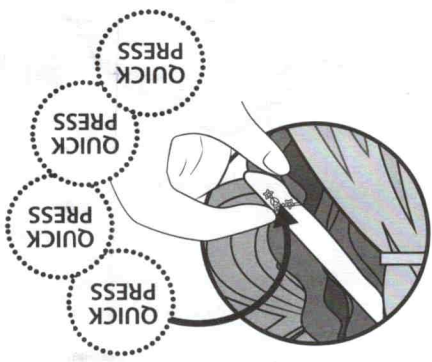
Wings light up in rotating rainbow of positivity glow.



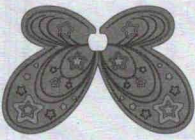
\* STELLA WILL GO INTO SLEEP MODE AT THE END OF EACH CYCLE (APPROX 30s)

### CHOOSE YOUR COLOUR GLOW LIGHT MODE

QUICK PRESS TO ACTIVATE COLOUR AND CHOOSE/CHANGE FROM ONE TO THE NEXT\*



Wings light up in one colour.



Pink glow = Caring

Yellow glow = Happiness

Purple glow = Courage

Blue glow = Calmness

\* STELLA WILL GO INTO SLEEP MODE AT THE END OF EACH CYCLE (APPROX 30s)

**X3 TEMPORARY BATTERIES INCLUDED** For try-me feature

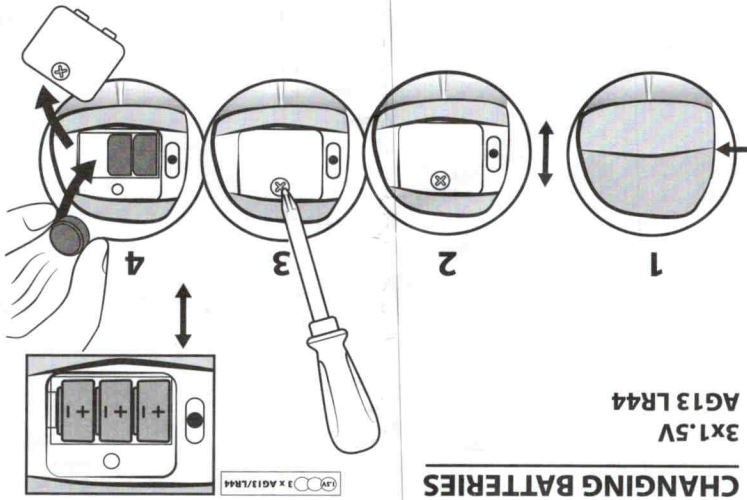
Works best with fresh batteries

**Requires 3 x Button Cell AG13 (LR44) Battery, (Demonstration Batteries Included) Cross head screwdriver (not included) needed to replace battery.**

- Keep batteries out of the reach of children at all times.
- Never put button cell batteries in your mouth for any reason.
- Seek immediate medical attention if a battery is ingested.
- Remove the old battery first and ensure it is correctly disposed or recycled.
- Batteries should be replaced by an adult and inserted observing correct polarity.
- Always check to ensure the compartment lid is correctly sealed and secured before giving the toy to the child.
- Non-rechargeable batteries are not to be recharged.
- Rechargeable batteries are to be removed from the toy before being charged.
- Rechargeable batteries are only to be charged under adult supervision.
- Exhausted batteries are to be removed from the product.
- The supply terminals are not to be short-circuited.
- Batteries are to be removed from the product before long-term storage.
- Do not dispose of batteries in fire.
- Batteries should be recycled or disposed of as per state and local guidelines.
- Use new batteries to obtain best performance.
- Different types of batteries or new and used batteries are not to be mixed.
- Alkaline batteries recommended.
- Only batteries of the same or equivalent type as recommended should be used.
- Batteries supplied are for demonstration purposes only and may require replacing within a short period of time.

**CHANGING BATTERIES**

**3X1.5V  
AG13 LR44**



**WARNING** This product contains a Button or Coin Cell Battery. A swallowed Button or Coin Cell Battery can cause internal chemical burns in as little as two hours and lead to death. Dispose of used batteries immediately and safely. Keep new and used batteries away from children. If you think batteries might have been swallowed or placed inside any part of the body, call your local Poison Information Hotline and seek immediate medical attention.

Help the environment by disposing of your product and batteries responsibly. The wheellie bin symbol indicates that the product and batteries must not be disposed of in the domestic waste, as they contain substances which can be damaging to the environment and health. Please use designated collection points or recycling facilities when disposing of the item or batteries.

More information can be found on:

<http://www.recycle-more.co.uk> | [www.recyclenow.com](http://www.recyclenow.com)



**WARNING:** CHOKING HAZARD - DREAM SEEKERS FASHION DOLL CONTAINS SMALL-PARTS COMPONENTS AND IS NOT SUITABLE FOR CHILDREN UNDER 3 YEARS.

**CAUTION:** ADULT SUPERVISION ENCOURAGED FOR YOUNG CHILDREN. DO NOT PUT DREAM SEEKER INTO THE MOUTH, AS HAIR FILAMENTS MAY BECOME DETACHED FROM THE TOY DURING USE. KEEP DREAM SEEKER'S HAIR CLEAN TO PREVENT BUILD UP OF DUST AND ALLERGENS. DO NOT EAT. EXCESSIVE OR REPETITIVE BENDING OF THE WINGS MAY DAMAGE LIGHT-UP FEATURE. INTERNAL ELECTRONICS, SURFACE WASH ONLY.

**IMPORTANT:** PLEASE REMOVE ALL PACKAGING ATTACHMENTS BEFORE GIVING THIS PRODUCT TO A CHILD. PLEASE RETAIN PACKAGING AND INSTRUCTIONS FOR FUTURE REFERENCE. COLOURS AND CONTENTS MAY VARY. DOLL CONTENTS: POLYESTER FIBER. ALL NEW MATERIAL.

**Warning:** Not suitable for children under 36 months. Small Parts. Choking Hazard.

**RECYCLING OUR PRODUCTS**  
All our product and packaging is designed with easy and safe recycling in mind. For information on the National Recycling Strategy and the recycling logo on this pack or product please visit [www.recycle-more.co.uk](http://www.recycle-more.co.uk) - where you will find the answers to your UK recycling questions.



**CHARACTER**  
Customer Service Department  
Tel No: 0161 633 9808  
Made in China  
Distributed by  
Character Options Ltd,  
Leas, Oldham OL4 5LJ, UK

**WARNING:** This toy produces flashes that may trigger epilepsy in sensitized individuals.

**Item: DREAM SEEKER LIGHT-UP  
Item Number: 13841  
Age Grade: 5 years plus**