



INSTRUCTIONS FOR USE

Please keep this instructions for future reference

BATTERY INSERTION AND REPLACEMENT

1. Unscrew the top part to remove the battery lid.

2. Insert 3 x 1.5V "AA" (LR6) batteries (included, negative end (-) first into battery compartment. Match positive (+) and negative (-) signs as shown in image. Batteries may leak if improperly installed. Remove the batteries when toy is not used for an extended period of time.

3. To replace lid, fit tabs into slots and screw closed.

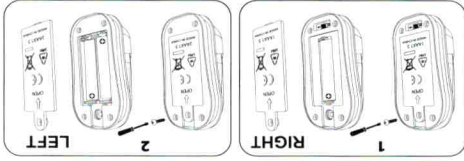
Diagram to show how to open the battery door and insert batteries.

BATTERY SAFETY INFORMATION

Only adults should install and replace batteries. Only use batteries of the same or equivalent type that are recommended for use. Do not mix different types of batteries: alkaline, standard (carbon-zinc), or rechargeable (nickel-cadmium). Do not mix old and new batteries. Remove dead or exhausted batteries. Remove the batteries during long periods of non-use. Always remove exhausted batteries from the toy. Battery leakage and corrosion can damage this product. Dispose of batteries safely. Never short-circuit the battery terminals. Do not immerse-operated toys in water. Wipe clean only.

ELECTRONIC WASTE
(including batteries)

The wheellie bin symbol indicates the product and batteries must not be disposed of in domestic waste as they contain substances damaging to the environment and health. Please use collection points or recycling facilities.



1.5V 3 x AA

Requires 3 x AA Batteries. (Demonstrated Batteries included).

- Alkaline batteries recommended.
- Rechargeable batteries must only be recharged under adult supervision.
- Rechargeable batteries must be removed from the toy before recharging.
- Non-rechargeable batteries must not be recharged.
- Different types of batteries, or new and used batteries must not be mixed.
- Only batteries of the same or equivalent type as recommended should be used.
- Batteries should be replaced by an adult.
- Batteries must be inserted following the correct polarity.
- Exhausted batteries should be removed from the product.
- The supply terminals must not be short-circuited.
- Batteries should be removed from the product when not in use.
- Do not dispose of batteries in fire.

Item: Jigly Pets Tan Tan
The Orangutan
Item Number: JPO08-OR
Age Grade: 4 years plus

RECYCLING OUR PRODUCTS
All our product and packaging is designed with easy and safe recycling in mind. For information on how to recycle, on the back of product please visit www.Recycle-More.co.uk - where you will find the answers to your UK recycling questions.



BATTERY RECYCLING INFORMATION

Help the environment by disposing of batteries responsibly. The wheellie bin symbol indicates that batteries must not be disposed of in domestic waste as they contain substances which can be damaging to the environment and health. Please remove exhausted batteries from the product and send designated collection points or recycling facilities when disposing of batteries.



WARNING! CHOKING HAZARD

Not suitable for children under 36 months. Choking hazard (small parts). Please remove all packaging attachments before giving this product to a child. Please use discretion at the end of the useful life of this product do not dispose in normal household waste. Check with your local authority or responsible disposal centre and submit to the collection point for the recovery and recycling of electrical and electronic equipment. **IMPORTANT!** Please retain packaging/instructions and purchase details for future reference as they contain important information.

Distributed by:
Character Options Ltd,
Lees Brook Mill, Lees Road,
Lees, Oldham, OL14 5LJ, UK
Tel No: 0161 633 9808
Customer Service Department
www.character-online.co.uk
Made in China



Manufactured by:
Golf
© 2021
Imported by:
Toy Zone Trade, S.L.
32002 C/los Naturals, Spain
4 Kowloon, Hong Kong
4 Kowloon, Hong Kong
4 Kowloon, Hong Kong

