

- 500 Crystal Beads • 1 Crystal Designer Studio
- 1 Necklace with clasps • 1 Necklace Pendant • 1 Clasp
- 2 Rubber Bands • 1 Ring • 6 Connector Plugs • 1 Bracelet
- 5 Bracelet Disks • 2 Bead Trays • 6 Design Templates
- 1 Bead Scoop • 1 Water Sprayer • Instructions

WARNING! CHOKING HAZARD.

Not suitable for children under 36 months. Choking hazard (small parts and small balls). Strangulation hazard (long cord). Please remove all packaging attachments before giving this product to a child. Please use discretion if making purchases for children younger than the age recommended on this package. Product specifications, colour and contents may vary from those illustrated. **IMPORTANT!** Please retain packaging/instructions and purchase details for future reference as they contain important information.



Item: Beados Crystal S4 Crystal Designer Studio
Item Number: 10756
Age Grade: 4 years plus

WARNING! Risk of entanglement/strangulation due to long cord.



Imported by:
Character Online Ltd,
Lees Brook Hill, Lees Road,
Lees, Oldham, OL14 5JL, UK
Customer Service
Tel No: 0161 433 9808
Made in China

©2013 Moose.
MADE IN CHINA

www.character-online.co.uk

WARNING!
CHOKING HAZARD - Small parts & small balls.
Not for children under 3 years.

DO NOT PLACE BEADOS IN MOUTH. AS THE BEADS CONTAIN A BITTER TASTE, IT IS ADVISED TO WASH HANDS AFTER USE. IMPORTANT: PLEASE RETAIN THE PACKAGING AND INSTRUCTION SHEET. THEY CONTAIN VALUABLE PRODUCT INFORMATION. DO NOT DISCARD. WARNING! CONTAINS LONG CORD. STRANGULATION HAZARD. KEEP STRING AND FINISHED NECKLACES AWAY FROM YOUNG CHILDREN. CAUTION: ADULT SUPERVISION SHOULD BE ENCOURAGED FOR YOUNG CHILDREN. ASSEMBLY BY ADULT IS RECOMMENDED. DO NOT EAT.

DESIGN TIPS

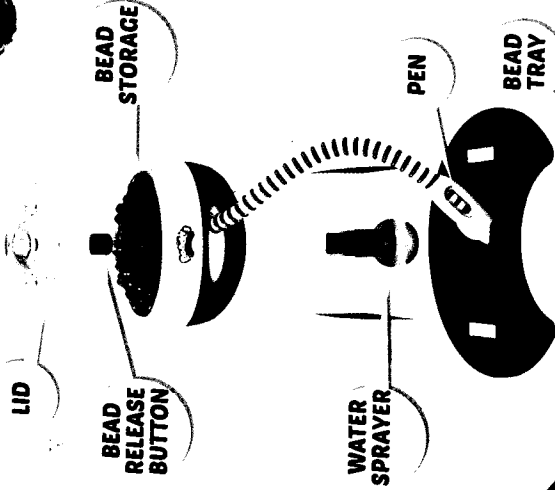
- If beads get stuck, turn pen upside down, shake
- If beads get stuck in bead storage, lift lid, push finger into beads, replace lid
- Ensure hands are dry when handling beads
- Too much water makes the beads sticky and requires longer drying time
- Ensure designs are dry to touch before removing from bead tray
- Gently sliding a design template under the dried bead design will help remove it easily from the bead tray
- To make design stronger, spray water on reverse side of final design and let dry overnight
- Wash bead tray well with soapy water after use and allow to air dry
- Wash hands well with soapy water after handling beads



BEADOSBEADS.COM

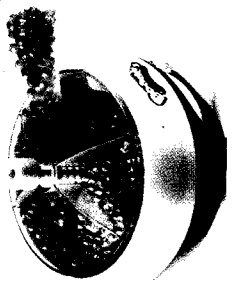
HAVE FUN!

GETTING STARTED



INSTRUCTIONS

1.



Fill all 6 bead compartments.

2.



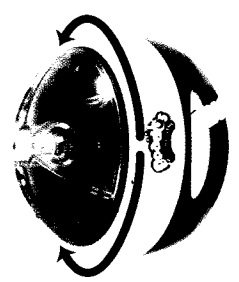
Place design template in the back of bead tray under tabs.

3.



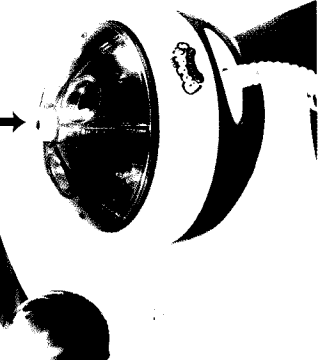
Place tray with template as shown.

4.



Turn bead storage so chosen bead colour is facing forward.

5.



Push button to release beads into pen.

6.



Push pen button to place beads onto tray, matching colours on template.

design templates used instructional purposes only.



SPRAY!

DISPLAY!

7.

Holding 5cm away from design, evenly
spray your complete design approx
5-6 times. Allow 20 minutes to
dry before removing
from tray.



CONTENTS

- 500 Crystal Beads • 1 Crystal Designer Studio
- 1 Necklace with clasps • 1 Necklace Pendant • 1 Clasp
- 2 Rubber Bands • 1 Ring • 6 Connector Plugs • 1 Bracelet
- 5 Bracelet Disks • 2 Bead Trays • 6 Design Templates
- 1 Bead Scoop • 1 Water Sprayer • Instructions

WARNING! CHOKING HAZARD.

Not suitable for children under 36 months. Choking hazard (small parts and small balls). Strangulation Hazard (Long cord). Please remove all packaging attachments before giving this product to a child. Please use discretion if making purchases for children younger than the age recommended on this package. Product specifications, colour and contents may vary from those illustrated.

IMPORTANT: Please retain packaging/instruction and purchase details for future reference as they contain important information.

DO NOT PLACE BEADOS IN MOUTH. AS THE BEADS CONTAIN A BITTER TASTE, IT IS ADVISED TO WASH HANDS AFTER USE. IMPORTANT: PLEASE RETAIN THE PACKAGING AND INSTRUCTION SHEET. THEY CONTAIN VALUABLE PRODUCT INFORMATION AND DO NOT DISCARD. WARNING! CONTAINS LONG CORD. STRANGULATION HAZARD. KEEP STRING AND FINISHED NECKLACES AWAY FROM YOUNG CHILDREN. CAUTION: ADULT SUPERVISION SHOULD BE ENCOURAGED FOR YOUNG CHILDREN. DO NOT EAT.

Item: Beados Crystal S4 Crystal
Designer Studio
Item Number: 10756
Age Grade: 4 years plus

WARNING! Risk of entanglement/strangulation due to long cord.

Imported by:
Character Options Ltd,
Lies Road, Little Clacton,
Customer Service Department
Tel No: **0167 633 9808**
Made in China

©2013 Moose.
MADE IN CHINA

WARNING:
CHOKING HAZARD - Small parts & small balls.
Not for children under 3 years.

www.character-online.co.uk

BRACELET INSTRUCTIONS

1.

Place design template in the back of bead tray under tabs.
Place the Crystal Beads on the tray matching the colours shown on the template.

2.

MAKE!

3.

SPRAY!

* See Design Tips in Crystal Designer Studio Instructions

Holding water sprayer 5cm away, spray each ring design once so the water evenly covers all the Crystal Beads on top of the 5 rings shown below. Hold for 10 sec to stick and leave for 20 mins to dry.

4.

5.

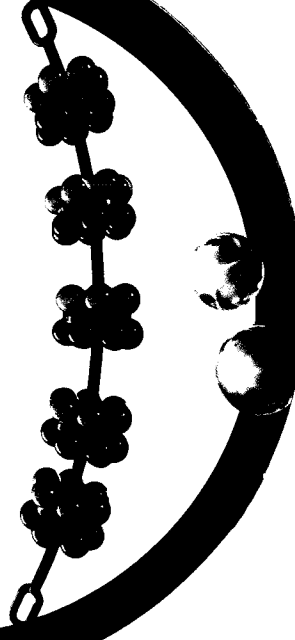
Remove the 5 ring designs without connector disks from the tray once dry then spray each connector disk once again.

6.

Place the dry ring designs on top of the wet connector disks and hold for 10 sec to stick. Once all disks are in place spray each cluster once with water and leave to dry for another 20 min.

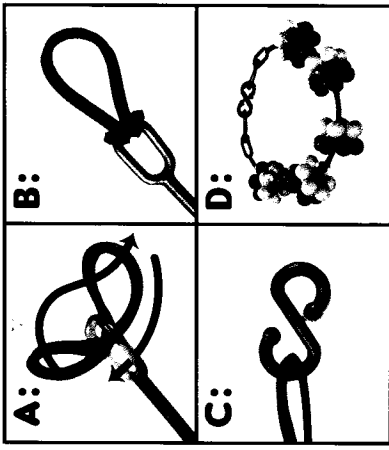
7.

Once all the Crystal clusters are fully dry, feed them onto the bracelet cord so that each cluster is on a ball.



8.

Feed rubber band through the eyelets of the bracelet and loop back through itself.



RING + NECKLACE INSTRUCTIONS

1.

Place design template in the back of bead tray under tabs.

2.

Place the Crystal Beads on the tray matching the colours shown on the template.

MAKE!

3.

SPRAY!

See Design Tips in Crystal Designer Studio Instructions

Holding water sprayer 5cm away, spray your design 5-6 times so the water evenly covers all beads of your design.

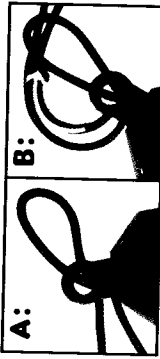
4.

Place the connector plug (dimples down) in the centre of the wet design. Hold for 10 seconds to stick and let design dry for 20 min.

5.

Once design is dry, carefully remove from bead tray and plug the design into the ring or locket. Simply pop the design out to mix up your look!

6.



Before wearing the necklace, feed the looped end of the string through the eyelet. Then pull the clasp through the loop. Pull tight before wearing!

5.

Remove the 5 ring designs without connector disks from the tray once dry then spray each connector disk once again.

6.

Place the dry ring designs on top of the wet connector disks and hold for 10 sec to stick. Once all disks are in place spray each cluster once with water and leave to dry for another 20 min.



7.

Once all the Crystal clusters are fully dry, feed them onto the bracelet cord so that each cluster is on a ball.



8.

Feed rubber band through the eyelets of the bracelet and loop back through itself.

