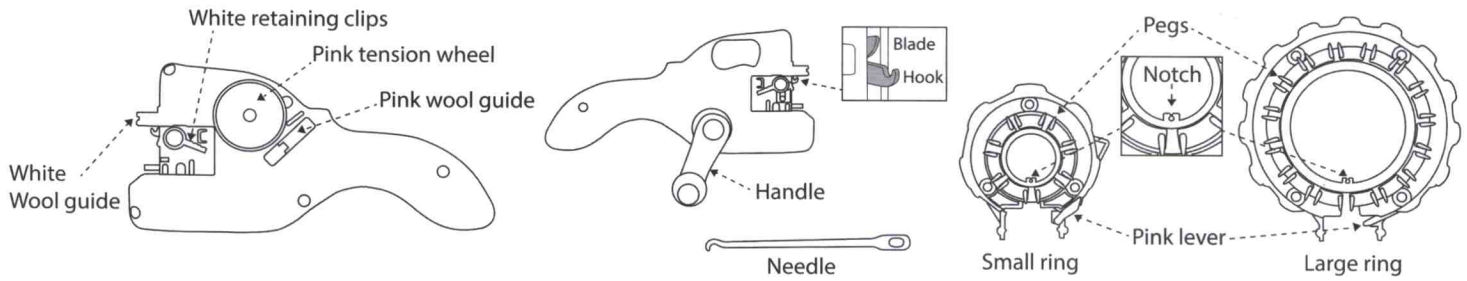




5+ EASY KNIT Usage Instructions



A Unit Setup

- 1) Select which size of ring you want to use.

B Loading the ring with yarn

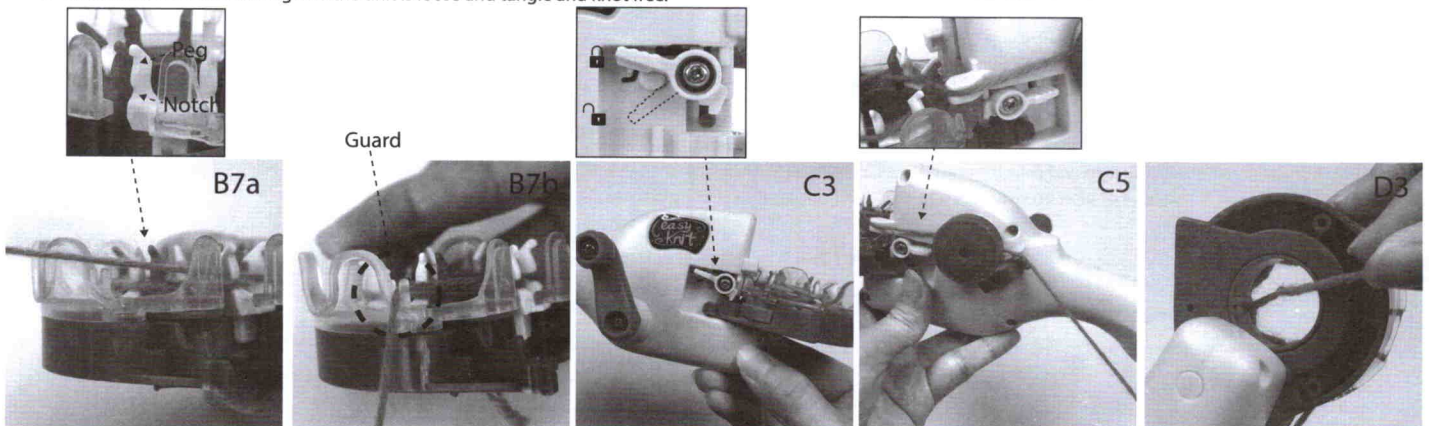
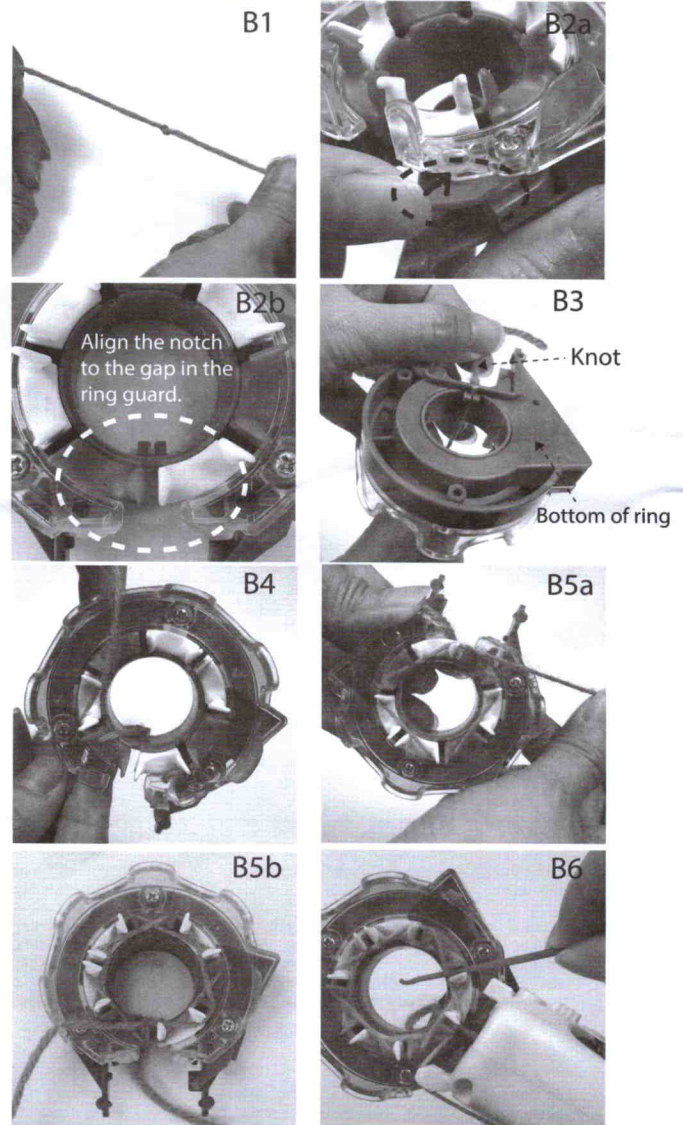
- 1) Tie a knot on the wool you want to use about 12cm from the end of the wool. (Pic B1)
- 2) On the ring, press the pink lever inward (Pic B2a) to allow the knitting ring to freely rotate. Spin the ring until the notch on the inner purple ring aligns to the gap in the ring guard. (Pic B2b)
- 3) Slip the wool through the notch with the tail away from the pegs. (Pic B3) Pull to allow a gap (3-5mm) between the knot and the notch to allow space to wind on and tension correctly.
- 4) Wind on the wool. Start with going in front of the pair of pegs to the left of the notch. (Pic B4)
- 5) Wind on going in front and behind each pair of pegs (Pic B5a) in clockwise direction for 2 complete cycles. (Pic B5b) Keep tension on the wool but don't make it too tight or loose.
- 6) Using the finger or needle included to push down the wool between each pair of pegs to make the first 2 cycles tight and compact. (Pic B6) There are notches at the base of each set of pegs where the wool should be. (Pic B7a)
- 7) Now you can rest the wool on the transparent guard. (Pic B7b)

C Load the ring onto the Unit

- 1) Reset the Easy Knit machine by turning the handle clockwise until it will no longer turn.
- 2) Ensure the 2 white retaining clips on each side of the unit are pushed down.
- 3) Slide the ring into position and lift the white retaining clips to lock the ring in position. (Pic C3) Make sure the notch is still align with the gap of ring guard as in Step B2.
- 4) **IMPORTANT:** Check the end of the wool (Pic B1) is still in the notch with about 3-5mm gap to the pink wool and that it hasn't gotten in the pink wool guide.
- 5) Lift the wool from the transparent guard and pull the wool through the Pink tension wheel ensuring it runs through the white wool guide and then through the pink wool guide. (Pic C5)

D Start Knitting

- 1) Ensure all the wool is tightly pressed to the bottom of the ring again by pushing between each set of pegs using the needle provided. For the first few rounds of knitting start slowly and push down the stitches after each round.
- 2) While holding the end of the wool (Pic B1), rotate the handle clockwise for 1 cycle, it will drive the peg to rotate in anticlockwise direction, the knitting starts, the hook will pick up the wool on the bottom of the peg then the pink blade will push the wool over the top of the peg to complete one stitch. The blade will then retract back inside the machine to complete 1 knitting cycle.
Keep on slowly and steadily for best results. Keep checking if the wool is rise up and over the peg, push all the wool down regularly using your finger or the needle to avoid dropping stitches.
- 3) After 5 complete cycles detach the knot from the notch to allow knitting to fall freely through the ring. (Pic D3)
- 4) Keep knitting and now you can speed up gently but ensure that wool remains at the bottom of the ring to avoid dropping stitches.
- 5) Keep an eye on your knitting beneath the easy knit unit. Make sure it doesn't get stuck and ease free if it does.
- 6) Make sure the wool feeding into the unit is loose and tangle and knot free.

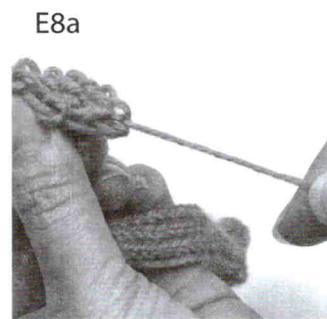
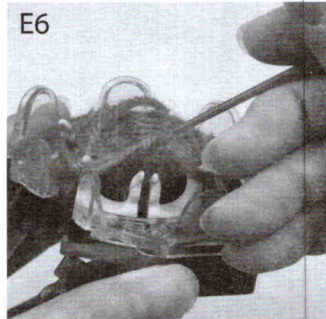
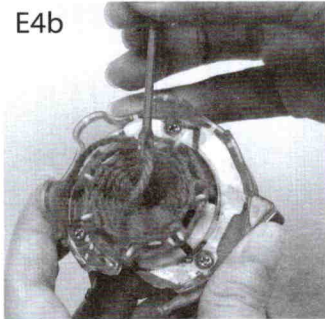
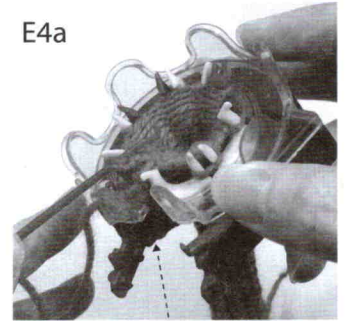
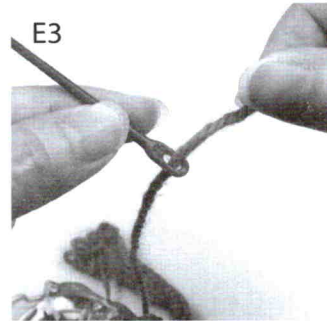




5+ EASY KNIT Usage Instructions

E Complete your piece

- 1) Once you desired length of tube is reached, cut the wool with a pair of scissors (not included) with 20cm of free tail to hand stitch it closed.
- 2) Remove the ring from the Easy knit handle by pressing down the locking levers on each side of the handle and pulling gently.
- 3) Put the loose tail of wool through the needle and tie a knot. (Pic E3)
- 4) Starting with the centre pegs (Pic E4a) sew through each peg in a clockwise direction for 1 complete cycle. (Pic E4b)
- 5) Once the tube is secure snip the knot with scissors and unthread the needle.
- 6) Use the needle hook to detach the wool from each peg by lifting it over the hooks on top of the pegs. (Pic E6)
- 7) Remove the tube of wool.
- 8) Pull the wool tube tight by pulling the sewn end (Pic E8a) and tying a knot to tie it off.
- 9) **Note: Cut the free end of thread as short as possible after tie the knot. (Pic E9)**



Troubleshooting

Problems / Questions	Solutions
After setting up, once turn the handle, the machine jam	Check if you had reset the machine main unit, See C1
Easy knit unit doesn't pick up the wool to make stitch	Correct this before moving onto the next stitch by using the hooked needle to take the bottom strand of wool and hook this over the wool strand from the tensioner and over the pegs. Make the stitch manually. It's easier to go slowly and ensure stitches aren't missed than making too many corrections. Or reverse the handle causing the pink knit blade back to bottom position, press the wool to the bottom of the ring and continue rotate the handle. In case dropping stitch occur again which could not be restore back to normal knitting condition, detach the ring from the machine. Turn clockwise for 1 peg, repeat the procedure C1 to C5, then restart knitting again.
Unit jams while knitting	If the unit jams stop turning the pegs, The cause of the jam is most likely to be because the knitting has risen up the pegs of the ring. PUSH the wool back down to the bottom of the ring often. See B6
Unit jams within first 2 cycles	Check if you allowed enough gap between the notch and the knot.
The machine jams/misses a stitch/ it goes out of alignment.	You can manually click the ring back into place by gently twisting to the left until it clicks (this is a small movement)
The wool split whilst you are making the stitch	Stop turning, push the wool down with your finger. Do a couple of stitch and pause 1/2 way though the next stitch. Then fix the split stitch.

Tips Visit www.character-online.com Search Easy Knit for instructional videos and more

- 1) Start slow and then speed up gently. To begin with ensure all wool is pushed down into the ring as your design gets bigger the weight of the wool and gravity will do this for you.
- 2) Don't forget to release the wool from the notch once you design is 5 rounds deep else the wool will tangle.
- 3) Don't forget to leave a gap of 3-5mm between the notch and the knot as this allows space for first few rounds of stitches.
- 4) Don't load the ring on without first remembering to reset the knitter to the start position.
- 5) Watch for split stitches. As with real knitting if the Easy Knit only take half the wool thread it will split a stitch. Stop - correct it manually by hooking the dropped half thread and then continue.
- 6) Re-ball your wool before starting and remove any knots as these will jam up the machine.
- 7) To get an even finish on when pulling the wool tight to close the tube pace a finger in the end to and pull that wool till it is snug then remove finger and gently pull wool to close completely.
- 8) Try a few times to get the tension of the wound on wool correct. If your stitches ping off then it's wound too tight, try again but reduce tension on the wound on wool. If your design feels loose and, occasionally unravels, wind the first two cycles slightly tighter.
- 9) If you want to join multiple tubes to and plait the ends use a slip knot at the start so you don't end up with a knot in your plait.

Note: When you wear the tube or plait on your arm or head, the free end of tube should be as short as possible after tie the knot.

RECYCLING OUR PRODUCTS

All our product and packaging is designed with easy and safe recycling in mind.
For information on the **National Recycling Strategy** and the recycling logo on this pack or product please visit - www.Recycle-More.co.uk - where you will find the answers to your UK recycling questions.



Adult supervision recommended.
Patent Pending.

CONTENTS

- Main unit - 1
- Large ring - 1
- Small ring - 1
- Pink wool - 1 x 10g
- Purple wool - 1 x 10g
- Needle - 1

WARNING! CHOKING HAZARD.

Not suitable for children under 36 months. Choking hazard (small parts), strangulation/entanglement hazard (long cord). Please remove all packaging attachments before giving this product to a child. Please use discretion if making purchases for children younger than the age recommended on this package. Product specifications, colour and contents may vary from those illustrated.

IMPORTANT: Please retain packaging/instructions and purchase details for future reference as they contain important information.



Manufactured by:
Character Options Ltd.,
Lees Brook Mill, Lees Road,
Lees, Oldham OL4 5JL, UK
Customer Service Department
Tel No: 0161 633 9808
Made in China

www.character-online.co.uk

PROXY A/S
Gothersgade 14, 4th Floor DK-1123
Copenhagen K, Denmark
www.proxyas.com

Item: Easy Knit
Item Number: 07229
Age Grade: 5 years plus

Art No.06174-180620-V1