

BBC

# DOCTOR WHO

## MECHANICAL FUNCTION:

ACTION	RESULT
<ul style="list-style-type: none"> <li>• SWITCH ON.</li> <li>• NO ACTION FOR 5 MINS.</li> <li>• OPEN FRONT DOORS.</li> <li>• LIFT TARDIS UP.</li> <li>• PLACE TARDIS DOWN.</li> </ul>	<ul style="list-style-type: none"> <li>• SWITCH OFF ALL FUNCTION (SLEEP MODE).</li> <li>• NO RESULT.</li> <li>• TARDIS DE-MATERIALISATION SOUND IS HEARD.</li> <li>• TARDIS RE-MATERIALISATION SOUND IS HEARD.</li> </ul>

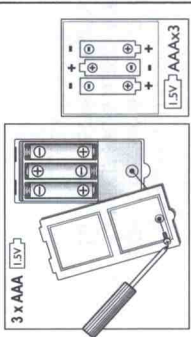
## TROUBLESHOOTING AND GENERAL CARE:

PROBLEM	SOLUTION
• TARDIS HAS WEAK OR NO SOUNDS OR LIGHTS.	• INSTALL FRESH BATTERIES.

## GENERAL: AVOID DROPPING THE TARDIS. IT CONTAINS ELECTRONICS AND WILL NOT WITHSTAND EXCESSIVE ABUSE.

### Second Doctor's TARDIS Requires 3 x AAA Batteries. (Batteries Not Included)

- Alkaline batteries recommended.
- Rechargeable batteries must only be recharged under adult supervision.
- Rechargeable batteries must be removed from the toy before recharging.
- Disposable/standard batteries must not be recharged.
- Disposable/standard batteries, or other non-rechargeable batteries must not be mixed.
- Only the same type of batteries should be used.
- Only the same type of batteries should be used.
- Batteries must be inserted following the correct polarity.
- Batteries must be inserted following the correct polarity.
- Exhausted batteries should be removed from the product.
- The supply terminals must not be short-circuited.
- Batteries should be removed from the product when not in use.
- Do not dispose of batteries in fire.




  
 Manufactured by  
 Character Online Ltd,  
 Lees Brook Hill, Lees Road,  
 Croydon, Surrey, CR9 3JL, UK  
 Customer Service  
 Tel: 0161 633 9808  
 Made in China  
[www.proxyarts.com](http://www.proxyarts.com)

**IMPORTANT: EPILEPSY WARNING!** Please read before using this product or allowing children to use it.  
 Some people are liable to have an epileptic seizure or loss of consciousness when exposed to flashing lights or certain normal conditions of everyday life. Such persons could risk a seizure while viewing the light from this product. This may occur even if there has been no previous medical problems or experience of epilepsy. If you or a member of your family has ever shown epileptic symptoms when exposed to flickering lights, you should consult your doctor before using this or any other similar product.

[www.character-online.co.uk](http://www.character-online.co.uk)

### WARNING! CHOKING HAZARD.

Not suitable for children under 36 months. Choking hazard (small parts). Please remove all packaging attachments before giving this product to a child. Please use discretion if making purchases for children younger than the age recommended on this package. At the end of the useful life of this product do not dispose in normal household waste. Check with your local authority or responsible disposal centre and submit to the collection point for the recovery and recycling of electrical and electronic equipment. Product specifications, colour and contents may vary from those illustrated.

**IMPORTANT:** Please retain instructions and purchase details for future reference as they contain important information.

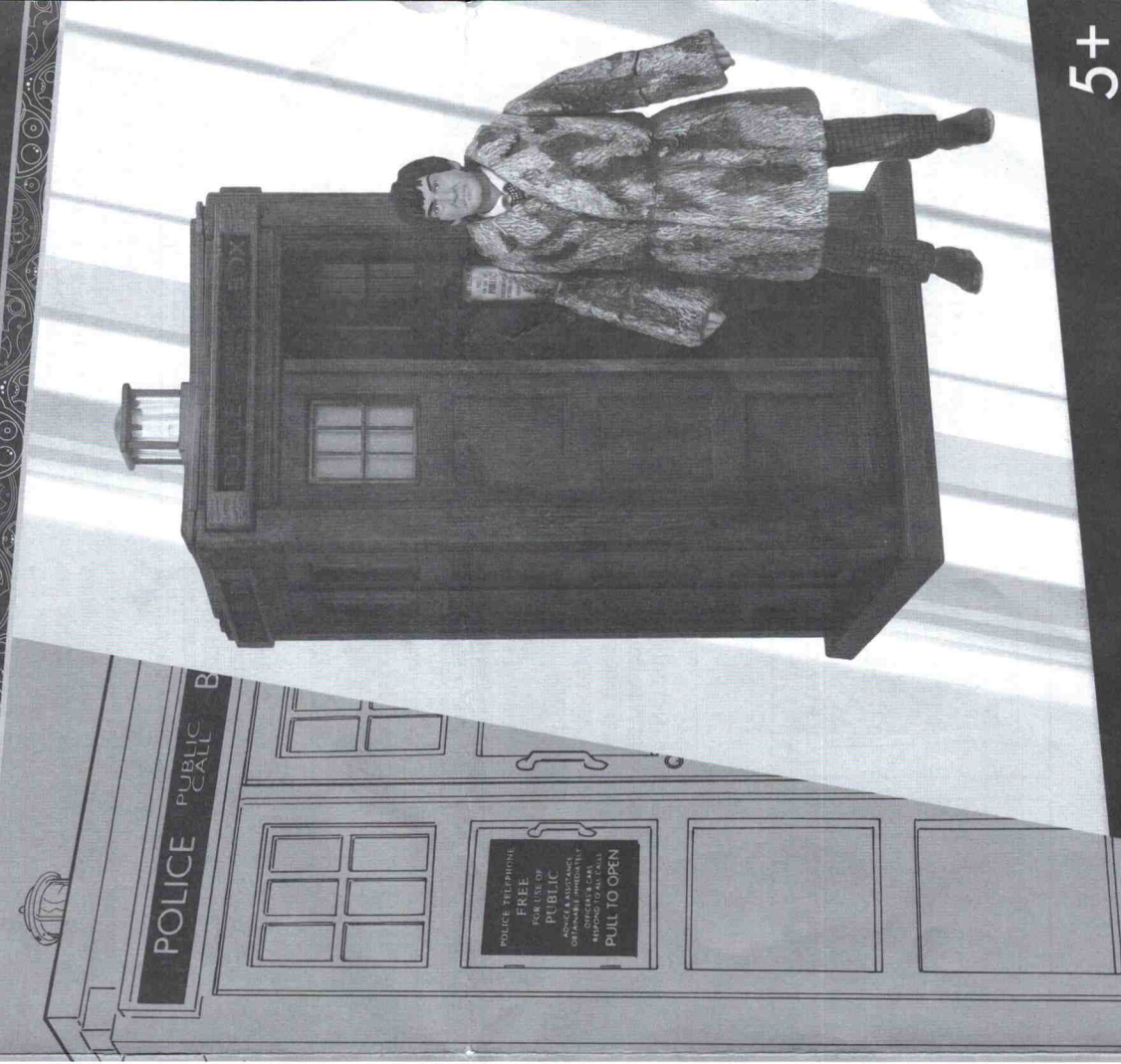
### CONTENTS:

- 1 x Second Doctor in Fur Coat Action Figure
- 1 x Electronic TARDIS Vehicle

**Item: Doctor Who: 2020 CO Internet Exclusive: Second Doctor & TARDIS The Abominable Snowmen**  
**Item Number: 07243**  
**Age Graded: 5 years plus**

### RECYCLING OUR PRODUCTS

All our product and packaging is designed with easy and safe recycling in mind.  
 For information on the **National Recycling Strategy** and the recycling logo on this pack or product please visit [www.Recycle-More.co.uk](http://www.Recycle-More.co.uk) - where you will find the answers to your UK recycling questions.



**THE SECOND DOCTOR & ELECTRONIC TARDIS**  
 FROM **THE ABOMINABLE SNOWMEN (1967)**  
 COLLECTOR SERIES SET WITH LIGHT & SOUND FX

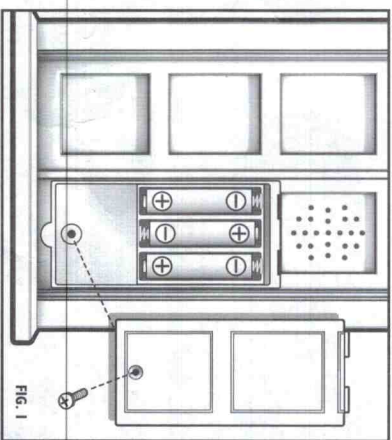
5+



BBC, DOCTOR WHO and TARDIS, (word marks and logos) are trade marks of the British Broadcasting Corporation and are used under licence. BBC logo © BBC 1996, Doctor Who logo © BBC 2018. Licensed by BBC Studios.

Art No: 07243-270121-VIA

**GETTING STARTED:**  
FIRST INSTALL 3 FRESH CLEAN AAA BATTERIES IN THE BATTERY COMPARTMENT IN THE BACK OF THE TARDIS AS SHOWN (FIG. 1) ENSURING THE CORRECT POLARITY. SHOULD THE TARDIS FAIL TO OPERATE, CHECK THAT THE BATTERIES HAVE BEEN INSTALLED CORRECTLY.



**SWITCHING ON:**  
SLIDE THE SWITCH ON THE BASE TO THE ON POSITION AND PLACE THE TARDIS DOWN ON A LEVEL FLAT SURFACE. THE TOY HAS LIGHTS AND SOUNDS BUILT IN. THE LIGHT IS IN THE LAMP ON THE ROOF.

**FEATURES:**  
YOUR TARDIS IS AN ELECTRONIC TOY TARDIS IN SCALE WITH THE DOCTOR WHO ACTION FIGURE RANGE. IT COMES WITH THE FOLLOWING ELECTRONIC AND NON-ELECTRONIC FEATURES BUILT IN:  
• OPENING AND CLOSING FRONT DOORS.  
• TAKE OFF WITH SOUND FX AND LIGHTS.  
• LANDING WITH SOUND FX AND LIGHTS.

## OPENING & CLOSING FRONT DOORS:

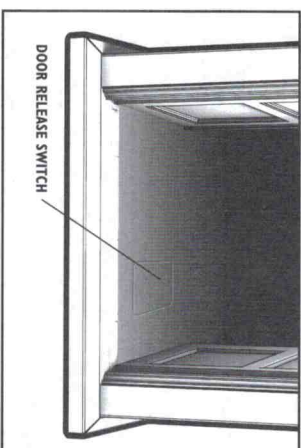
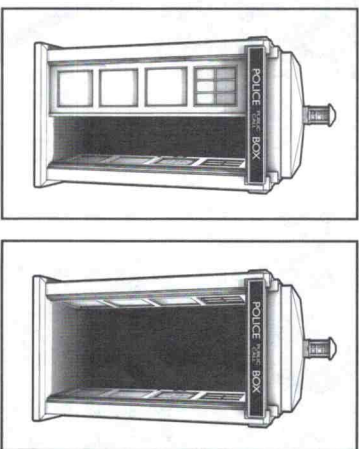
THE TARDIS DOORS PUSH OPEN INWARDS. TO OPEN THE DOORS, PUSH EACH DOOR BACK INSIDE THE TARDIS. THE RIGHT HAND DOOR IS SPRING-LOADED, AND WILL BE HELD OPEN BY SPRING TENSION.

TO CLOSE THE DOORS, FIRST GENTLY PULL ON THE LEFT HAND DOOR, THEN PRESS THE HIDDEN SWITCH ON THE FLOOR OF THE TARDIS TO RELEASE THE RIGHT HAND DOOR. THE DOOR WILL SPRING CLOSED. (FIG. 2).

## TAKE OFF AND LANDING WITH SOUND FX & LIGHTS:

WHEN THE TARDIS IS LIFTED UP A SWITCH ON THE BASE IS RELEASED AND THE TARDIS DE-MATERIALISATION SOUND IS PLAYED ACCOMPANIED BY THE DISTINCTIVE FLASHING TOP LAMP LIGHT. THE TOP LAMP REMAINS LIT AND WILL CONTINUE TO PULSE UNTIL THE TARDIS LANDS.

WHEN THE TARDIS IS PLACED BACK DOWN ON A SURFACE THE SWITCH ON THE BASE IS DEPRESSED AND THE TARDIS RE-MATERIALISATION SOUND IS PLAYED ACCOMPANIED BY THE DISTINCTIVE FLASHING TOP LAMP LIGHT. THE TOP LAMP



REMAINS LIT AND WILL CONTINUE TO PULSE UNTIL THE LANDING IS COMPLETE.

**NOTE:** AS SOON AS THE TARDIS IS LIFTED OR PLACED DOWN IT JUMPS IMMEDIATELY TO THE APPROPRIATE EFFECT SO YOU CAN LAND AND TAKE OFF VERY QUICKLY, HOWEVER YOU WANT.

**SLEEP MODE:**  
THE TARDIS IS DESIGNED SO THAT IF IT'S LEFT ON IN LIFT UP POSITION FOR MORE THAN 5 MINUTES, THE FLASHING TOP LAMP WILL AUTOMATICALLY TURNED OFF TO CONSERVE POWER. THE TARDIS WILL ALSO GOES INTO SLEEP MODE ONCE LANDING FX SOUND COMPLETED AFTER LANDING.

